

# A WASTEWATER/SUMP SUBMERSIBLE PUMPS

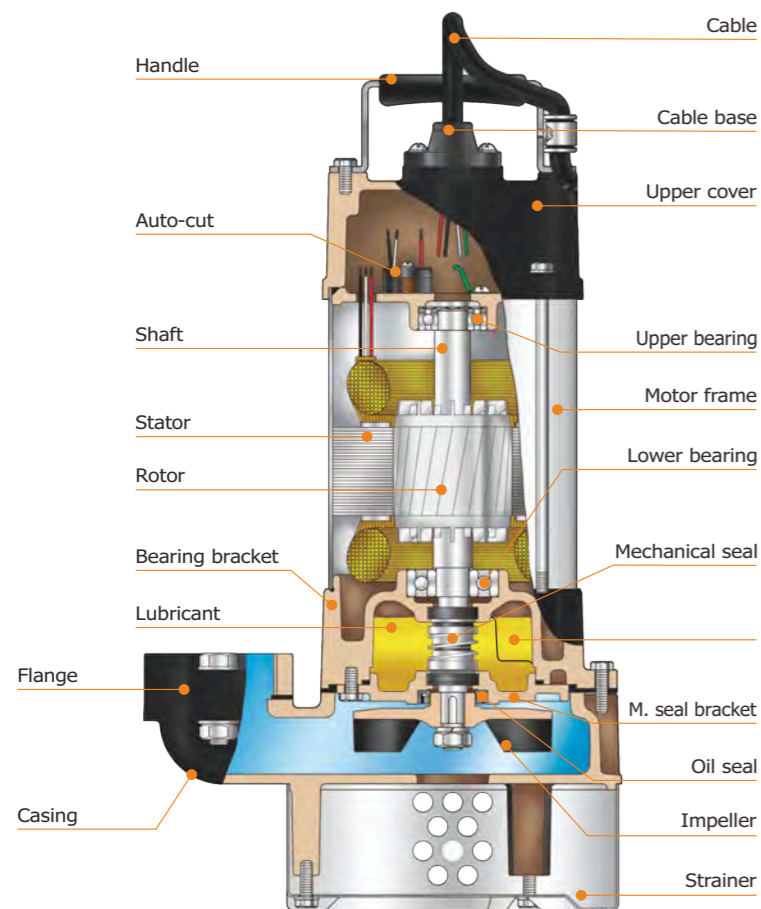


## FEATURE

- A precision manufactured motor is achieved utilizing the highest standard of quality control. All rotors adopt heat treatment method for drive shaft assembling and stator winding impregnated with varnish and heat dried in industrial oven.
- HCP's professional assembly line, complimented with a synthesized production test ensures the highest level of final pump quality.
- Standard accessories include : cable with an epoxy resin sealed water resistant cable base, Auto-cut thermal motor protector, dual mechanical seals and lip seal design.
- The A-05A is an extreme practical pump with low temperature oil filled motor and single seal design (CA/CE).

## APPLICATIONS

- Waste water.
- Sump drainage.
- Flood control.
- Dewatering for fish pond or basement and cellars.

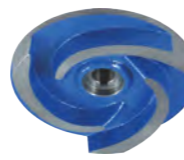


A-05A



A-21 · 31

Note: The vortex impeller can cause higher amperage when operate incorrect direction.(A-05A~A31)



A-23 · 33

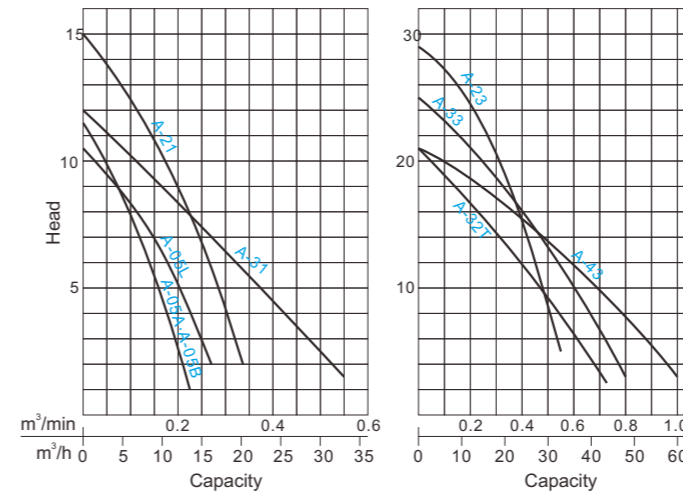


A-43

## PRODUCT NOMENCLATURE

A	-	05	A
Type		HP	Style
A	-	2	1
Type		Discharge inch	HP

## PERFORMANCE CURVES



## SPECIFICATIONS

Item	Description	
Liquid temp.	0~40°C(32~104°F)	
Applications	Wastewater · Sewage · Drainage water	
Max depth	30m	
Pump sect.	Structure	Impeller: Semi-open M. seal: Double M. seals Bearing: Ball type
	Material	Upper cover: FC-200 Casing: FC-200 Impeller: FC-200 M. seal: Lower: Sic/Sic · Upper: CA/CE
		Motor sect.
Insulation: B Class		
Frequency: 50Hz		
Material	Protector: Auto-cut	
	Frame: SUS304	
	Main shaft: SUS410 (2~3HP : SUS403)	
Cable	VCT or H07RNF or SJOW/SOW	

※Pumps can be customized to fit specifications.

## PERFORMANCE SPEC.

Model	Power HP(kW)	Discharge Inch(mm)	Phase	Start Method	Head m	Capacity		Weight kg 1 /3	Solid Passage mm	Dimension (mm)		
						m³/min	m³/h			Length	Width	Height
A-05A	1/2(0.4)	2"(50)	1	Capacitor	8	0.1	6	12	8	227	161	352
				Direct								
A-05B	1/2(0.4)	2"(50)	3	Capacitor	8	0.1	6	14	8	227	161	372
				Direct								
A-05L	1/2(0.4)	2"(50)	1	Capacitor	7	0.15	9	16	8	245	173	430
				Direct								
A-21	1(0.75)	2"(50)	3	Capacitor	10	0.18	10.8	17	10	245	173	430
				Direct								
A-31	1(0.75)	3"(80)	1	Capacitor	6.5	0.3	18	19	10	278	173	457
				Direct								
A-32T	2(1.5)	3"(80)	3	Capacitor	12	0.4	24	42	11	385	216	575
				Direct								
A-23	3(2.2)	2"(50)	1	Capacitor	24.5	0.2	12	39	11	280	216	572
				Direct								
A-33	3(2.2)	3"(80)	3	Capacitor	16	0.4	24	44	11	385	216	575
				Direct								
A-43	3(2.2)	4"(100)	1	Capacitor	10	0.7	42	44	11	442	216	575
				Direct								

Note : Weight W/O Cable